

ALTON EVENING TELEGRAPH.

VOLUME 80.

ALTON, ILL., TUESDAY EVENING, APRIL 28, 1891.

NO. 298

DO YOU USE
Fine Superior Stationery
 ...FOR...
Correspondence?
 IF NOT, WHY NOT!

A letter to please should be written on good heavy note paper. Nothing is more aggravating to the correspondent than note paper made of poor, inferior stock of light weight.

We have had made for our "SPECIAL TRADE," a line of Superior Heavy Weight "NOTE PAPERS" including seven different shades, which will be sure to please the most fastidious tastes. This stock, received the other day, includes the following leading styles:

- Superior Quality WHITE, Envelopes to Match.
- CREAM
- Foreign IVORINE
- English PARMELOTT
- Irish BOND
- Elite LEMOX LINENE
- Wedding PLATE

These goods we sell in any desired quantity with or without envelopes, or if preferred in lots of one quite in line boxes.

As to prices, you will find these goods comparatively cheaper than any you have been using. Once fairly tried you will use no other.

CHAS. J. DEGENHART,
 Third and Piassa Sts., Alton, Ill.

FOR THE TOILET.
 Viola Cream, Velota Powder,
 Fairy Face Powder, Infant Powder,
 Anti-Tan, Florida Water,
 And Fine Perfumes, etc., etc., at
MARSH'S DRUG STORE
 ALTON AND UPPER ALTON.

HOWELL'S CARPETS
 ARE
ALWAYS AHEAD
 — BUT HIS —

Spring Stock
 THIS YEAR IS
IMMENSE
 YOU CAN'T HELP BUT BE PLEASED WITH
Colors, Styles and Prices.

CATARRH

FRANK BUDEE,
 DEALER IN
Wines and Liqueurs.
 AGENT FOR
ANHEUSER'S BOTTLED BEER.

THE INDUSTRIAL FIELD.

Settlement of the Street Car Strike at Detroit.

THE STRIKERS WIN A VICTORY.

ALL Discharged from the Motor Truck and Related During Good Behavior—The Michigan Car Company Paid to the Street Car Workers—End of a Long Strike at Detroit, Michigan.

DETROIT, Mich., April 28.—The arbitration in the street railway trouble in this city ended Monday morning. On the organization of the committee by the street car workers, C. B. Henderson, ex-chairman, Arbitrator M. J. Dow, editor of the Evening News, who had chosen this as its representative, wished to take an advanced step in dealing with its own employees. It consisted of the right of organization, will hereafter deal with its men as a union, will take back the discharged employees and retain them during good behavior, will present a list of those who were discharged employees, will not consider the company with respect to the matter, and will not, on its part, to serve the matter will be referred to the present board of arbitration.

WRECK ON THE RAIL.

General Persons Injured on the Big Four Road.

A DISASTER NEAR INDIANAPOLIS.

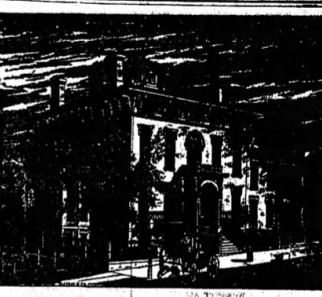
While heading at a high rate of speed the Great Train from St. Louis met with an accident—The Trouble Caused by an Old Hand Wagon Was Checked for a Distance of Eight Feet—Loss of the Passengers.

INDIANAPOLIS, April 28.—At 8:00 Sunday morning the "Big Four" mail train No. 38 was bound from St. Louis and with a most remarkable accident three miles west of the city. The train was running at a full rate of speed when a hand wagon struck the track. The train was stopped, and the engine and tender were thrown from the tracks. The mail coach, a Pullman, struck the track and jumped the track, entirely breaking away from the body of the train. The coach rolled over upside down in the ditch and was in a few moments for more than 100 feet. There were at least 100 persons on the train, all of whom were more or less injured.

THE PRESIDENT'S STATE VISIT.

Chicago, April 28.—The President's State Visit.

CHICAGO, O., April 28.—The President's State Visit. The President's State Visit. The President's State Visit.



Alton Sanitarium Co.
 Composed of
 Drs. C. R. Enos, S. Cordelia Enos, W. H. Enos, J. W. Enos, Lawrens Enos and Clinton Enos.

Located at Alton, Ill.

With a Branch Office at Edwardsville, Ill. and one at Jerseyville, Ill.

This Company was formed with the express purpose of

GIVING PATIENTS BETTER ADVANTAGE OF TREATMENT

Than has ever been offered heretofore.

COAL, COAL.

NOONAN COAL CO.

Soft and Hard Coal.

Best Coal in the Market.

NOONAN COAL COMPANY.

Spring Suits.

SUPERIOR SUIT OF CLOTHES.

SPRING WEAR.

H. C. G. Moritz.

SPRING SUITS!

E. L. BORKMANN.

IS VERVESTCHAGIN INSANE?

The Celebrated Russian Painter's Unexplained Departure for Europe.

NEW YORK, April 28.—Vestchagin, the Russian painter, sailed from New York Saturday under circumstances that leave little doubt that he is insane. His departure was unexpected. It is generally known that he had at last determined to sail in New York his former collector of paintings and engravings were placed on exhibition at the American Art Gallery. Only on Thursday last week, the artist was seen in preparation for the sale were stopped by a telegram from Vrestschagin, who had been living in isolation. That night the painter came to New York, and went directly to board the steamer. Harry Madison, his cousin, also left the city on the same day. It is known that he has been expecting for some time the mental collapse of Vrestschagin.

Making a Hero of Gen. Hatter.

Chicago, Ill., April 28.—The President's State Visit.

CHICAGO, Ill., April 28.—The President's State Visit. The President's State Visit. The President's State Visit.

CHICAGO, O., APRIL 28.—The President's State Visit.

CHICAGO, O., April 28.—The President's State Visit. The President's State Visit. The President's State Visit.

MARSH AT SAN FRANCISCO.

The President's Visit to San Francisco.

SAN FRANCISCO, April 28.—The President's State Visit. The President's State Visit. The President's State Visit.

ROCK, APRIL 27.—It is stated at the Yalton that during and after the explosion of the magazine at Tress, Kansas on Thursday morning last, the Pope presided the most recently, notwithstanding the fact that the commission whereby absolved the great building. It also appears that, although all the windows in the office were broken, the building was not damaged.

CHICAGO, APRIL 27.—A crowd of ten thousands of people gathered on the grounds of the Western Union building, which was destroyed, and many the roof.

SPRING SUITS.

THE NEWEST STYLES.

SPRING SUITS.
 THE NEWEST STYLES.

SPRING SUITS.

THE NEWEST STYLES.

SPRING SUITS.
 THE NEWEST STYLES.

SPRING SUITS.

THE NEWEST STYLES.

SPRING SUITS.
 THE NEWEST STYLES.

SPRING SUITS.

THE NEWEST STYLES.

SPRING SUITS.
 THE NEWEST STYLES.

SPRING SUITS.

THE NEWEST STYLES.

SPRING SUITS.
 THE NEWEST STYLES.

SPRING SUITS.

THE NEWEST STYLES.

SPRING SUITS.
 THE NEWEST STYLES.